



# Halfway Nursery Infant News

Wednesday 4<sup>th</sup> September 2024

Telephone: 0114 2482360

Email: [enquiries@halfway-inf.sheffield.sch.uk](mailto:enquiries@halfway-inf.sheffield.sch.uk)

Website: [www.halfwaynurseryinfantschool.org](http://www.halfwaynurseryinfantschool.org)

## This week's updates...

### Welcome back

Welcome back to school! We hope that you have all had a lovely summer break and are ready and raring to go as we head into the new school year. We have had a lovely first day back at school, with children settling in well into their new classes.

Our EYFS team are busy this week visiting all our new starters who will be joining us in nursery and Reception. We look forward to welcoming you all next week.

### School timings reminder

Thank you for remembering our new school times today. Please see below as a reminder of these:

Nursery		
Morning session	Lunch session	Afternoon session
8:30am - 11:30am	11:30am - 12pm	12pm - 3pm

Halfway Nursery Infant School		
Classroom doors open	Official start time/ registration	End of school day
8:40am	8:40am	3:10pm

Children in Reception and KS1 need to be dropped off promptly at 8:40am when classroom doors will open. Registers will be closed at 9:10am. Any child arriving after 9:10am will be classed as late and will receive an unauthorised absence.

### Attendance changes reminder

It is really important that your child attends school as often as they can and on-time. Last year we saw an amazing increase in our attendance figures and a big decrease in the number of our pupils classed as persistently absent (attendance below 90%). This is thanks to the hard work of our families. This year we want to build on this achievement and will be keeping you informed of your child's attendance and the school attendance regularly. Don't forget that the new national attendance monitoring guidelines have now come into effect.

### **PE kit reminders and uniform**

The children look really smart in their new uniforms and shiny shoes! Don't forget to make sure that all clothing is clearly labelled with your child's name so that it can be returned to them if it gets lost.

From this year, children in KS1 (year 1 and year 2), will need to have a PE kit in school to get changed into. This kit should be in a small bag that can live on their peg. If you have not already done so, please send in your child's PE kit asap.

Children in Reception will continue to have a big PE day, where they are able to come into school in their PE kit. Big PE will be held on a Monday for all children in Reception.

PE kits should consist of:

- ✓ Black or royal blue/navy shorts/ jogging bottoms
- ✓ White t shirt
- ✓ Pumps or trainers
- ✓ Black or royal blue/navy jumper (optional)

This PE kit is the same as Halfway Juniors, and, therefore, should help families when they transition to Year 3, as children will not need a new PE kit if their kit still fits them.

We know that the cost of living crisis continues, therefore, to support you with this change, we do not expect children to have the correct PE kit until Easter 2025. We hope that this gives families enough time to organise for these changes. Up until then children are welcome to bring in their own sportswear to change into - children will still be expected to come into school in uniform.

As a reminder, for safety reasons, children are not allowed to wear jewellery for PE, and long hair should be tied back. If your child wears small stud earrings to school, we advise that they do not wear them on their PE days. Alternatively, they can be covered with tape.

### **Staff news**

Congratulations to Miss Wylie who got married in the summer and returns to us as Mrs Lax. She had a wonderful wedding day!

Sadly, this week marks the beginning of Mrs Tatham's and Mr Beazer's last month with us. They will both be leaving us at the end of September. Both staff members have been at the school for many years and have become an integral part of our school-family. They will be greatly missed when they leave.

With this news, we are delighted to welcome Miss Markell, who will be joining Mrs Bird as part of our office team. Miss Markell will be working full-time in our office, and started with us this week to ensure a thorough handover.

## After school clubs

We are really pleased to share the following after school clubs for this half term. Please note, that for this term, the after school clubs are only available to children in year 1 and year 2 to help children joining us in F2 settle in. All clubs will finish at 4:10pm, with children to be collected from the main office. Children joining in with the sports clubs will need to have their PE kit in school for these sessions.

Next week, we will send out further information on how to request a place and pay for the clubs.

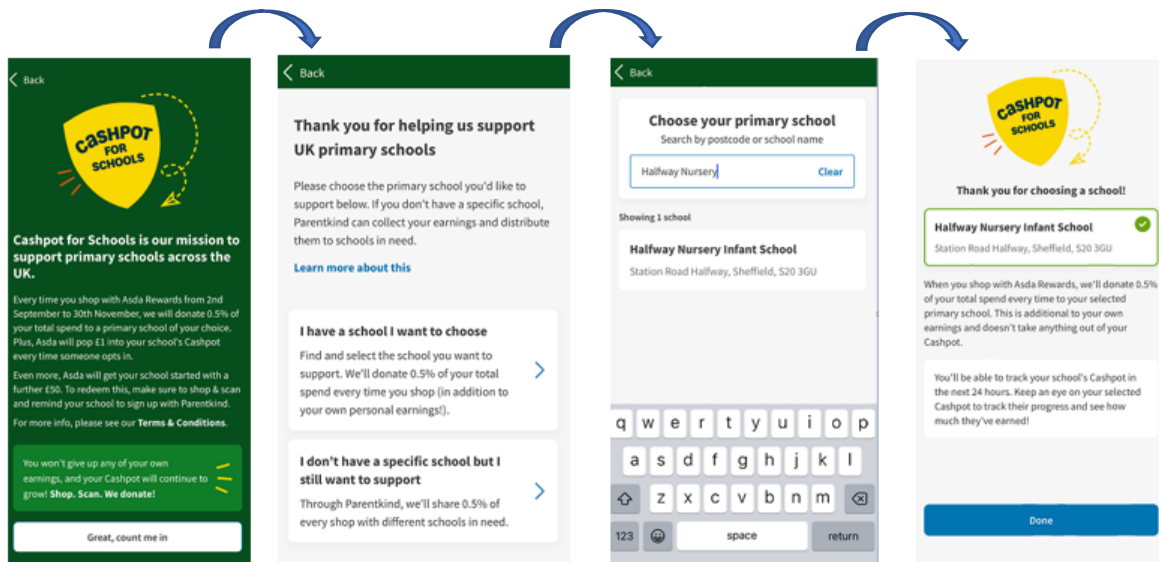
- Monday – Basketball with KRS (to start on Monday 16<sup>th</sup> September)
- Tuesday – Jam Coding (to start on Tuesday 10<sup>th</sup> September)
  - Please see separate flyer for how to book and pay for this.
- Thursday – Athletics with KRS (to start on Thursday 19<sup>th</sup> September)
- Friday – Dance with Jess (to start on Friday 20<sup>th</sup> September)

## ASDA Rewards

ASDA has launched “Cashpot for Schools” where it will donate £1 to us for every customer who picks a chosen school as their primary school, as well as 0.5% of your spend every time you shop and scan the app until the end of November! Just download the Asda Rewards app if you haven’t already, click on the “cashpots” menu, then click the “join cashpot for schools” button and search for your school.

It will not affect families in any way. You will still build up your own rewards as normal; Asda just gives extra to school, based on how much you spend!

Please support our school if you do shop at ASDA.



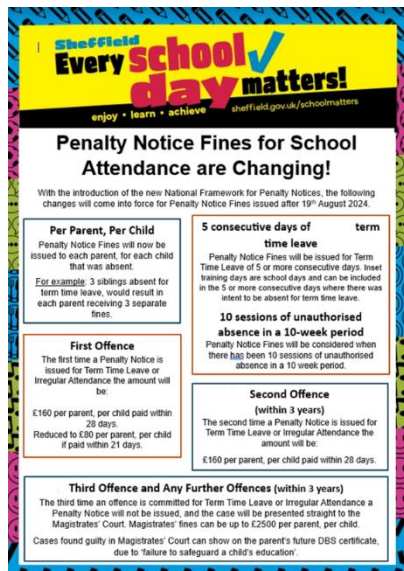
## Diary dates



- **Wednesday 4th - Friday 6th** ~ F2 and Nursery home visits.
- **Monday 9th - Wednesday 11th** ~ Nursery stay and play sessions.
- **Monday 9th and Tuesday 10th** ~ F2 half day visits.
- **Wednesday 11th** ~ F2 cohort first day.
- **Tuesday 1st October** ~ Individual photographs.
- **Tuesday 15th October and Wednesday 16th October** ~ F2 and KS1 parent's evenings.
- **Monday 28th October - Friday 1st November** ~ Half term
- **Monday 4th November** ~ INSET day (Nursery and school closed)

## Attendance

Don't forget that national changes to attendance monitoring are now in operation.



## Office opening hours

The main school office is open each day from 8am - 4pm, and the phone will be answered within these hours. Outside of these hours you will have the opportunity to leave an answer phone message, which will be replied to, if necessary, when the office is next open.

If you need to contact nursery then please call the school office number (including if your child will be absent). If you call the nursery number, this will automatically divert to the school office.

## Absences

If your child is unable to attend school for any reason, please ring as early as possible on 0114 248 2360. Choose Option 2.

## Parking

Parking outside of school can be a challenge. However, please do not park in front of our neighbours drives as they need access to them at all times. Please also be mindful of where you do park, to ensure you have not blocked in anyone and have allowed enough space for other cars to pass you.

**Free parking is available in the Supertram car park.**