



Halfway Nursery Infant News

Monday 24th February 2025

Telephone: 0114 2482360

Email: enquiries@halfway-inf.sheffield.sch.uk

Website: www.halfwaynurseryinfantschool.org

This week's updates...

Enrichment clubs

As a reminder all after-school enrichment clubs will start this week. Clubs finish at 4:10pm, apart from the Friday club which finishes at 4pm. If you have any queries about clubs please speak to the school office.

Artist visit

We are excited about our artist visit tomorrow. Please come and see what we create as a school at the end of the day outside on the field by the trim trail.

Thank you to everyone who has paid a contribution for this visit. If you have not yet paid, the item is still on ParentPay.

Art Gallery

You are invited to The Halfway Nursery Infant School 'Our Amazing Art' Gallery!

To showcase the amazing art work that the children have been working on during their art topic, children in Foundation Stage 2 and KS1 will present their masterpieces in an art gallery. The art gallery will be a great opportunity to celebrate how hard the children have worked during their art lessons throughout this half term.

It would be wonderful for your child to talk you through their learning and present their art to you, like a real artist! To enable this to happen, you are able to collect your child from their classroom on the day of their art gallery at 2:30pm and take them to the hall to visit the gallery. Once you have visited the gallery, you are then able to take them home.

We ask that no more than 2 people attend your child's art gallery session, due to fire restrictions and we ask that siblings within school are not collected to visit their sibling's art gallery.

To enable collection for the art gallery to run smoothly, we are asking that you complete a text form that will be sent out to you, to tell us whether you are intending to visit the art gallery so that we know to get your child ready to be collected early.

- **Wednesday 26th February** ~ Elmer's art gallery – 2:30pm – 3:10pm
- **Thursday 27th February** ~ Gruffalo's art gallery – 2:30pm – 3:10pm
- **Tuesday 15th April** ~ Year 1 art gallery – 2:30pm – 3:10pm
- **Thursday 17th April** ~ Year 2 art gallery – 2:30pm – 3:10pm

HIP Group – Friday treat!

Our HIP group will be selling hot chocolates, buns and biscuits as a Friday treat this week after school under the shelter on the playground.

- £1.00 hot chocolate
- 50p buns/biscuits (sold on a first come first served basis – once they're gone, they're gone!)

Cash only – please bring the correct change where possible. All ingredients will be displayed.

Thursday 6th March – World Book Day

We are inviting children to come to school dressed as a character from a story or wearing their pyjamas (no onesies please!). Please make sure your child's outfit and shoes still enable them to play outside. There is also a Where's Wally World Book Day competition you can take part in; please see the information attached.



Tuesday 11th March and Wednesday 12th March – Parent's Evenings

For January nursery starters and children in Foundation Stage 2 and KS1

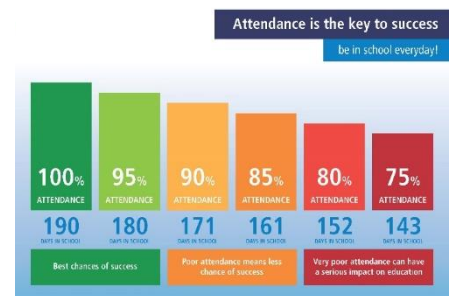
The text form that was shared with you, to indicate your preferred slot for the upcoming parent's evenings will close tomorrow. Your allocated time will be communicated to you by the end of this week. We will endeavour to give you a slot nearest to your preferred time, however, this may not always be achievable depending on the popularity of the slot. If you are unhappy with the time slot given to you, please speak to the school office who will be able to find you a different slot, or arrange for your child's class teacher to meet you at an alternative time.

Attendance

At the end of last half term our overall school attendance was 94.2%. This is below our attendance target of 95% but is heading in the right direction since Christmas.

We have 98 children from across school and nursery who have attendance at 95% or above, with 25 of these children having an amazing 100% attendance!

Thank you to everyone who is making sure their child attends school and nursery regularly. Don't forget you must let us know if your child is going to be absent from school or nursery, otherwise their absent will be recorded as unauthorised.



Wednesday 16th April – Class Photographs

All classes will have their photographs taken on this day. Children who were absent for their individual photographs, including those who have started with us in nursery since this date, will also have their individual photographs taken on this day.

Children who do not attend nursery on a Wednesday are invited to join nursery for their class photograph by coming to the main school entrance for 8:45am, where they can also have their individual photograph taken if necessary. Please let nursery staff know if you are planning to bring in your child for this photograph.

Outdoor Adventure

We are delighted to share with you that from this week children in Foundation Stage 2 and KS1 will take it in turns to participate in a weekly Outdoor Adventure session, as part of their PE and active learning curriculum. Year 1 will start their Outdoor Adventure sessions this week and year 2 will start theirs after Easter. Children in Foundation Stage 2 will see Outdoor Adventure becoming part of their regular outdoor provision.

The benefits of outdoor learning

Outdoor Adventure sessions aim to enhance a child's ability to function in various social situations by offering diverse experiences and opportunities. Outdoor Adventure can have a positive, lasting impact on a child's attitude toward themselves and their self-belief. When children believe they have something to contribute, they become more active in learning and contribute more to the educational process. Engagement and positive attitudes toward learning lead to greater success in adulthood.

Outdoor Adventure sessions

These sessions will be run in our small school woodland and school field, and led by our teaching staff. Some members of our teaching staff have received the Forest School Level 1 training which supports us with this exciting development and addition to our curriculum and school offer.

Sessions have been coherently planned to give pupils a wide range of opportunities to experience different activities in the outside space. Activities they will join in with include:

- cloud gazing
- creating journey sticks
- making potions and pies
- joining in with an alfresco orchestra

A thorough risk assessment has been conducted of the area, and a daily risk assessment will be conducted by staff to ensure the space is suitable to visit. We will aim to run our Outdoor Adventure sessions in most types of weather, however, staff will conduct ongoing risk assessments based on the weather (e.g. too wet, icy, hot etc.) and may need to change plans during the day.

What will my child need?

Children will need wellington boots (please write your child's name in these). These can be brought in and left in school for the half term, or brought in daily for the sessions.

Children will need a suitable coat, including hat, gloves or sunhat (weather dependent).

School will provide each child with a pair of waterproof trousers to wear for their session, however, families are welcome to send in their own should they wish.

- **Rainbow Fish** ~ Outdoor Adventure session on a Tuesday
- **Hungry Caterpillars** ~ Outdoor Adventure session on a Thursday

If you have any further questions about these sessions, please speak with your child's class teacher.

PE DAYS - changes after half term

Please see below for the days when each class will have their PE lessons this half term:

- **Gruffalos and Elmers** ~ Monday (*children come to school in their PE kit*)
- **Rainbow Fish** ~ Tuesday ([Outdoor Adventure](#)) and Thursday
- **Hungry Caterpillars** ~ Wednesday and Thursday ([Outdoor Adventure](#))
- **Enormous Crocodiles** ~ Tuesday and Friday
- **Crafty Chameleons** ~ Wednesday and Friday

Diary dates



- **Tuesday 25th February** ~ James Brunt land artist working with all children in school (*payment item on ParentPay*)
- **Wednesday 26th February** ~ Elmer's art gallery – 2:30pm – 3:10pm
- **Thursday 27th February** ~ Gruffalo's art gallery – 2:30pm – 3:10pm
- **W/b 3rd March** ~ School Council Big Spring Clean Week
- **Tuesday 4th March** ~ F2 vision screening
- **Thursday 6th March** ~ World Book Day
- **Tuesday 11th March and Wednesday 12th March** ~ Parent's Evenings
- **Wednesday 19th and Thursday 20th March** ~ F2 NHS height and weight screening
- **Friday 21st March** ~ Red Nose Day
- **W/b 24th March** ~ Scholastic Book Fair in school
- **Friday 28th March** ~ INSET day (school and nursery closed to pupils)

Monday 31st March – Friday 11th April ~ Easter holidays (school and nursery closed)

- **Tuesday 15th April** ~ Year 1 art gallery – 2:30pm – 3:10pm
- **Wednesday 16th April** ~ Class photographs
- **Thursday 17th April** ~ Year 2 art gallery – 2:30pm – 3:10pm

Friday 18th April – Monday 21st April ~ Easter bank holiday weekend (school and nursery closed)

Monday 5th May ~ May bank holiday (school and nursery closed)

Phonics screening dates: 9th June – 13th June. Children in year 1 (and those that did not pass it in year 2) will sit the screening check in this week. Please do not book any term-time leave for this week.

More information about upcoming diary dates will be shared with you nearer the time. Some dates are subject to change and any changes will be shared with you on the newsletter.



Halfway Heroes!



Well done to our learners of the week and our attendance winning class!

THE ENORMOUS CROCODILES



Harry
Gemma

CLASS 1

92.2%

The Crafty Chameleons



Lucas
Ayla

CLASS 2

94.5%

The Rainbow Fish



Annabel
Xander

CLASS 3

99.5%

ATTENDANCE
WINNERS!

THE HUNGRY CATERPILLARS



Harper
Olivia

CLASS 4

92.4%

The Gruffalos



Ted
Grace

CLASS 5

88.9%

The Elmers



George
Ava

CLASS 6

96.8%

Overall school attendance = 93.9%

Parking

To try to ease congestion outside of school, please avoid parking in front of the cones, on our neighbour's driveways or double parking along the road. Where possible, please consider parking a little further away and walking into school.

Free parking is available in the Supertram car park.

Contact us

The main school office is open each day from 8am - 4pm, and the phone will be answered within these hours. Outside of these hours you will have the opportunity to leave an answer phone message, which will be replied to, if necessary, when the office is next open.

Absences

If your child is unable to attend school for any reason, please ring as early as possible on 0114 248 2360. Choose Option 2.